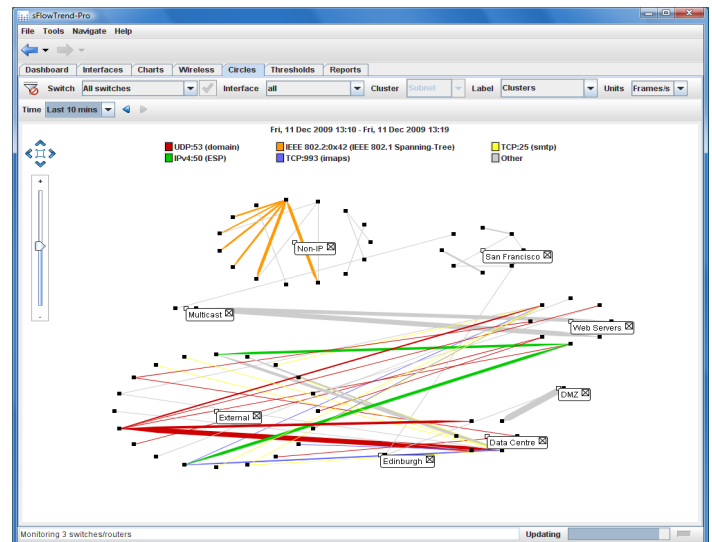


Introduction

Reliable and efficient integrated network services are essential for today's organisations to function properly. These organisations rely on the network infrastructure to provide applications (such as payroll, email, web, Citrix solutions, ERP, CRM, VoIP etc.) and to provide secure exchange of confidential information. As a consequence, changes in the behaviour and usage of the network will impact productivity, resulting in negative financial consequences and sometimes creating legal liabilities. Even organisations with small networks are exposed to this risk, since just a small number of users or applications can cause significant disruption. As such, maintaining continuous visibility of the behaviour and usage of the complete network, the performance of physical and virtual servers and rapidly identifying emerging issues is critical for organisations of all sizes.

sFlowTrend-Pro is a solution, developed by the inventors of sFlow®, InMon Corp., tailored to the needs of small and medium sized networks. It continuously monitors all switches, routers, and servers in the network using industry standard sFlow technology, summarising network health, highlighting issues and anomalous behaviour, and providing intuitive drill down for rapid identification of the root cause of any problem. sFlow is included at no additional cost in most network and virtual switches. Host performance monitoring is also supported by sFlow. Consequently most environments have all the embedded instrumentation needed to start monitoring and managing performance

sFlowTrend-Pro is designed to be easy to install and use, and because it is written in Java, will run on most platforms.



Features

- Dashboard provides overall view of network health and highlights issues.
- Intuitive drilldown to pinpoint the cause of congestion, broadcasts and other problems.
- Real-time reporting on network usage by end hosts.
- Identification of top protocols and applications in use on your network.
- Identification of security issues in the network, such as hosts showing scanning behaviour.
- Historical trending of utilisation and network usage. One week of historical data is available by default.
- Configurable thresholds allow easy monitoring of key switches or interfaces, and deviations from baseline.
- Automatic root cause analysis identifies the traffic that caused a threshold to trip, allowing immediate remediation.
- Graphical view of traffic between different regions of the network.
- Visualisation of relationships between physical and virtual hosts.
- Real-time summaries and trends of server performance metrics.
- Flexible querying and historical reporting on accumulated traffic data.
- Easy switch configuration using SNMP.
- Available as an easy to install application, or as a client-server installation to ensure continual 24x7 monitoring.
- Support for industry standard sFlow - see sflow.org for a list of switch vendors supporting sFlow.

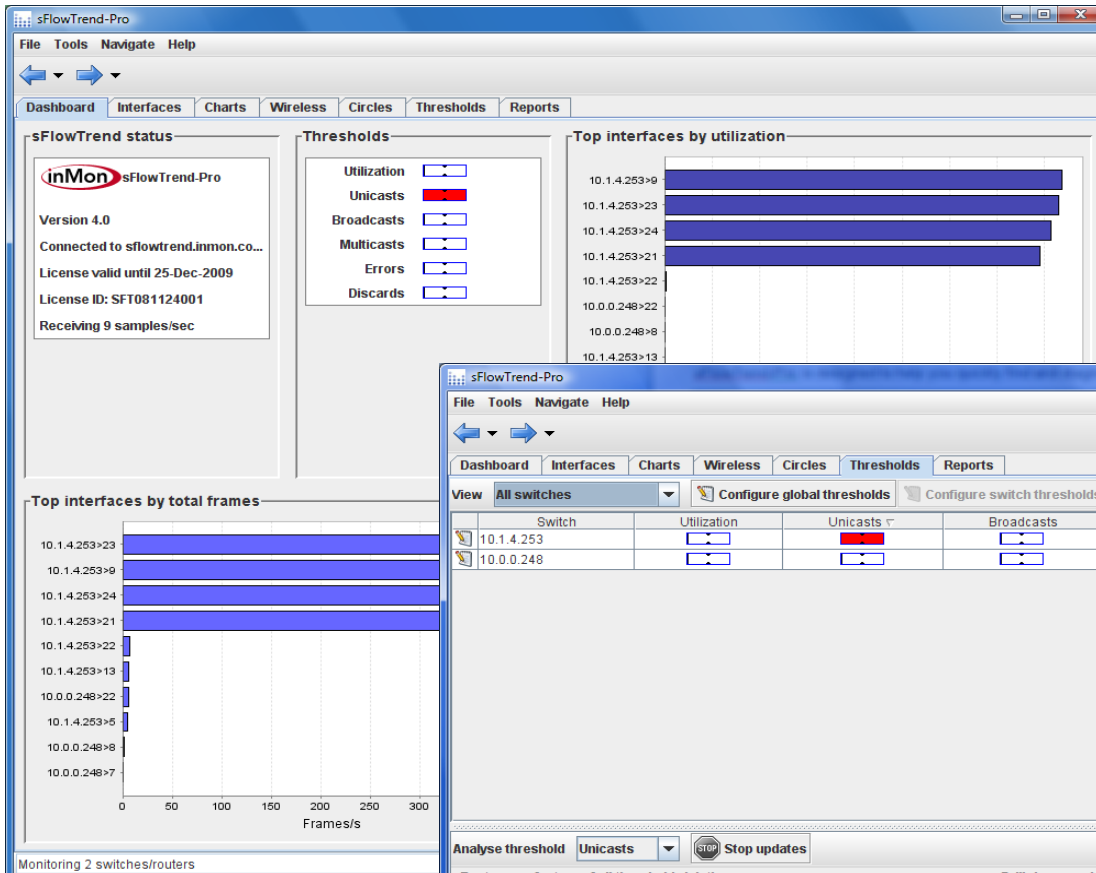
Benefits

- Quickly understand who is using the most bandwidth on your network, and what they are doing.
- Enforce corporate acceptable network use policies.
- Easily determine whether the network is healthy.
- Rapidly identify the cause of any problems or deviation from baseline with thresholds and intuitive drilldown.
- Understand trends in usage and accurately target upgrades.
- Monitor critical host performance parameters, such as CPU and memory utilisation, of an entire datacenter.
- Optimize performance of servers and network in a converged environment.
- Generate management reports to illustrate current and historical network usage and performance.
- Simple to install and use, so you can focus on the network, not the monitoring software.

Using sFlowTrend-Pro

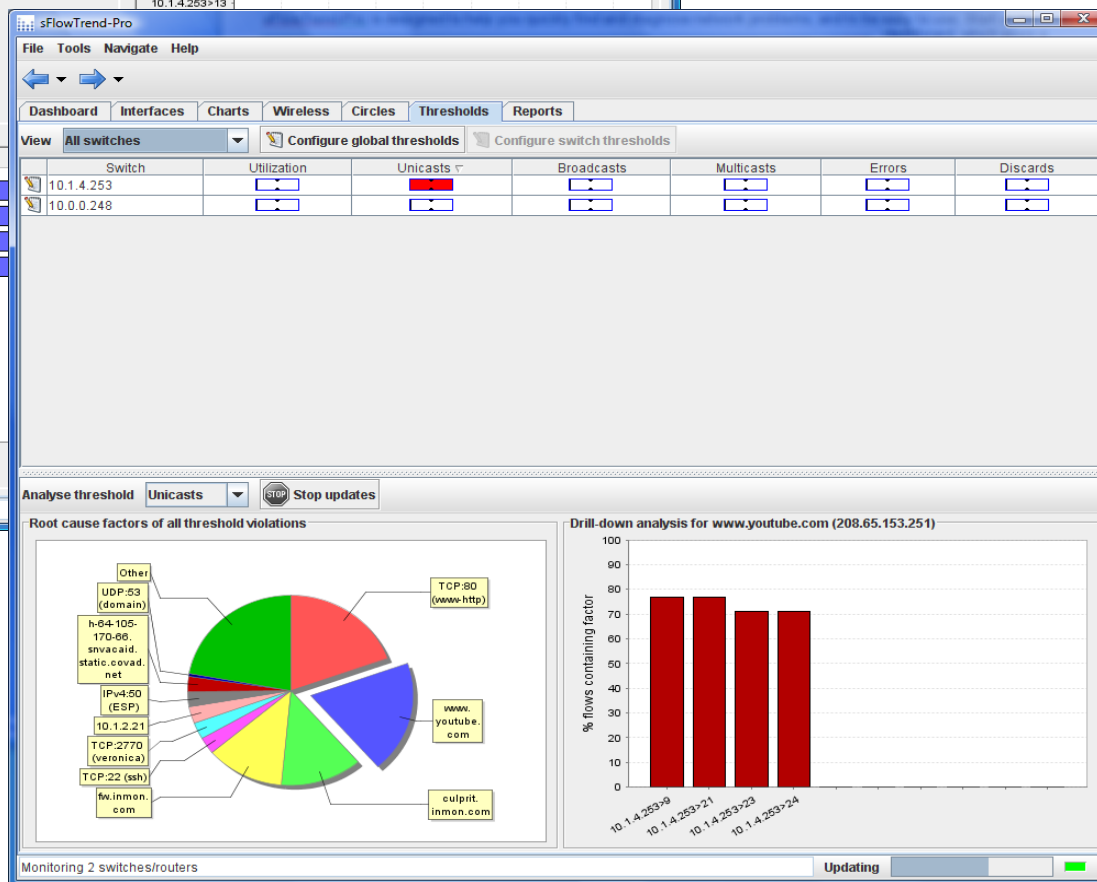
sFlowTrend-Pro is designed to help you quickly find and diagnose network problems, and to be easy to use. Start at the dashboard, which gives a summary of the network interfaces which are most utilised or are experiencing the highest errors, and the overall status of thresholds.

Click to drill down on the red Unicasts threshold, to find out the root cause. sFlowTrend-Pro immediately shows which switches are

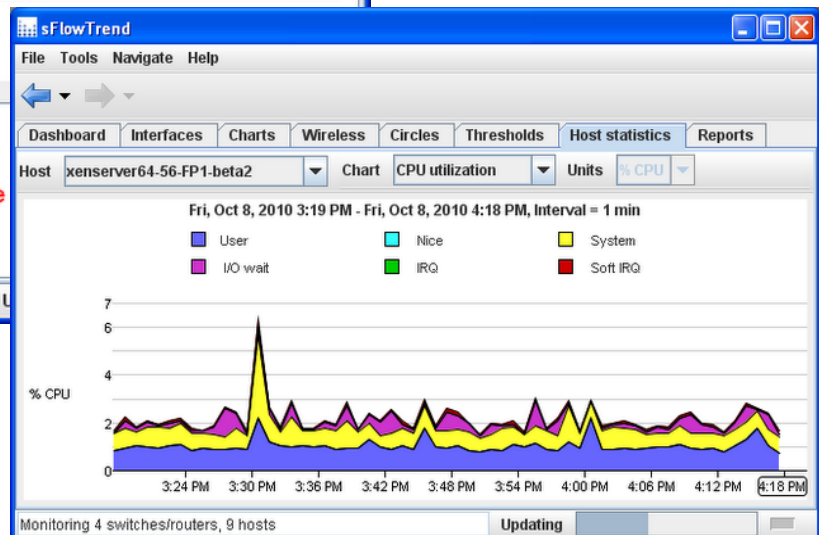


violating thresholds and deviating from the baseline. Additionally, the full visibility that sFlowTrend-Pro provides allows sFlowTrend-Pro to analyse the causes of the threshold violation.

The unique root cause analysis automatically finds the most significant network traffic causing the threshold violation, and identifies the switch interfaces the traffic is flowing over. From here,



Reports are generated in HTML, PDF, and CSV formats.



Availability

sFlowTrend-Pro is available from www.myinmon.com. A full-featured 30 day evaluation license is available. Licenses can be purchased in two forms:

- An annual license, which will be valid for one year, and must be renewed for the software to continue functioning thereafter. Web-based support is included for the year.
- An indefinite license, which does not expire, and includes web-based support.

Please see www.myinmon.com for pricing information.

Technical specifications

Specifications:

- Monitoring protocols supported: sFlow (including host and wireless extensions), and SNMP for switch information.
- Number of agents monitored: 10s of switch and host sFlow agents.
- History retention: 1 week by default, but customisable.
- Real-time, interactive charts highlighting: top traffic flows, traffic per VLAN, broadcast and multicast flows, security threats, virtual and server performance, and overall usage trends.
- Thresholds on utilisation, unicasts, broadcasts, multicasts, errors and discards, per interface, per switch or overall network.
- Standard and customisable reports generated in PDF, HTML and CSV formats.
- Flexible filtering on all data.
- Export of accumulated traffic data.
- Runs as an application using Java Web Start, or as a client-server for 24x7 monitoring.

sFlowTrend-Pro is a Java based application. It runs on any system that meets the minimum requirements, and supports Java 6.0 or later, and for the application option, Java Web Start (eg Sun Java 6.0 or later).

Minimum configuration:

- CPU: 2GHz Pentium-based processor or equivalent.
- Memory: 500MB.
- Disk: 5GB free disk space.

The specifications for a specific installation are highly dependent on the number of agents monitored, the amount of traffic in the network being monitored, and how long history is kept for.

Other InMon solutions

InMon offers three solutions to manage the traffic on your network:

- sFlowTrend—a free Java application which will monitor one switch at a time, and give you visibility into the traffic flowing through that switch. Retains one hour of data in memory.
- sFlowTrend-Pro—Client-server traffic monitoring and reporting solution that monitors tens of switches simultaneously, and saves the traffic data to a disk-resident database. Length of traffic history stored is configurable.
- Traffic Sentinel—an enterprise class, client-server traffic management solution, which provides sophisticated traffic and security analysis, allows very flexible queries and supports custom integration. Traffic Sentinel support sFlow, NetFlow, J-Flow and IPFIX.

	sFlowTrend	sFlowTrend-Pro	Traffic Sentinel
Number of agents	5	10s	100s
Data retention	1 hour (while application running)	Weeks	Months
Data sources	sFlow	sFlow	sFlow, NetFlow, J-Flow, IPFIX, SNMP polling
Architecture	Application	Application or Client-Server	Client-Server
Real-time analysis	Top-N flow charts Counter trends Inter-subnet traffic Scanning and DDoS	Top-N flow charts Counter trends Inter-subnet traffic Scanning and DDoS	Top-N flow charts Counter trends Inter-subnet traffic Scanning and DDoS
Thresholds	Yes	Yes	Yes
Querying and Reporting	Yes	Yes	Yes
Host location	Yes	Yes	Yes
Server performance monitoring	Yes	Yes	Yes
Events	No	No	Yes
Topology maps	No	No	Yes
Automatic traffic controls	No	No	Yes

For further information

For further information on sFlowTrend-Pro, please see www.sflowtrend-pro.com, or request an evaluation from www.myinmon.com.

InMon Corporation

580 California Street
Fifth Floor
San Francisco, CA 94104

sales@inmon.com

Tel: +1 (415) 283-3260

Fax: +1 (415) 283-3360